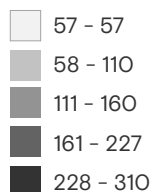
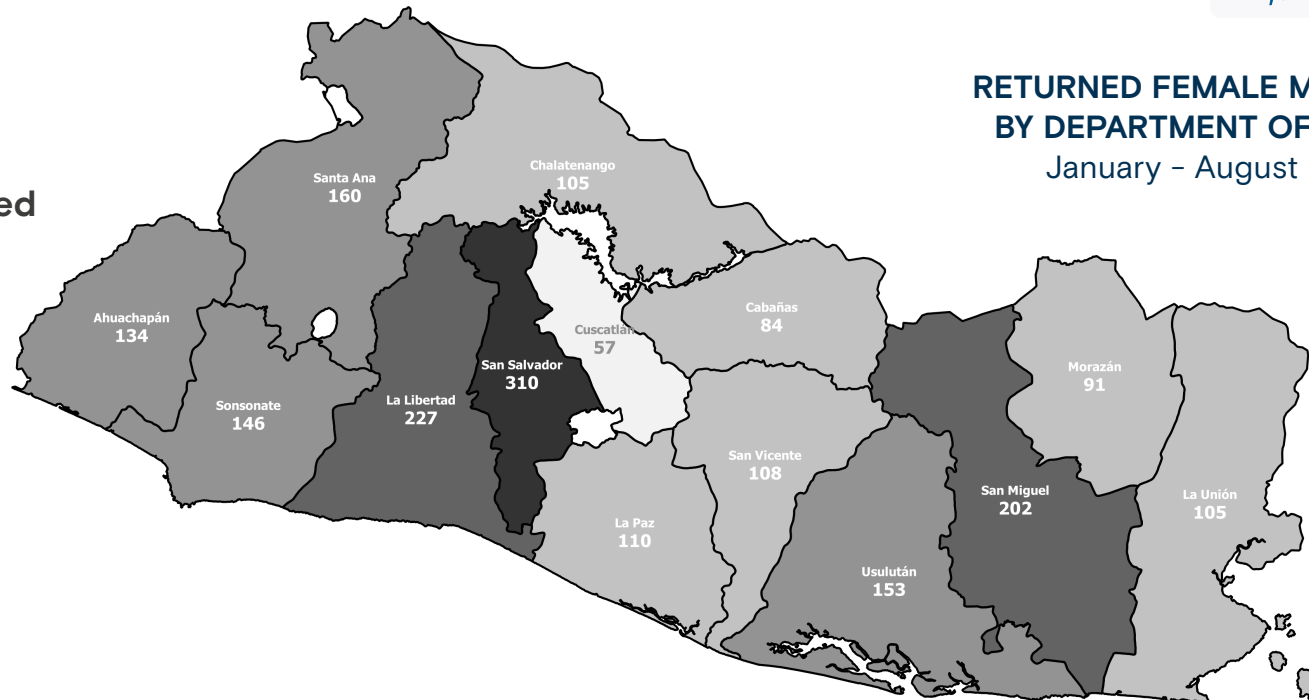
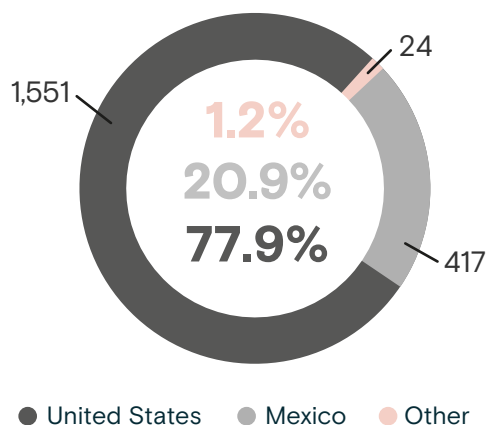


**1,992**  
 Total number of returned female migrants  
 January - August 2023

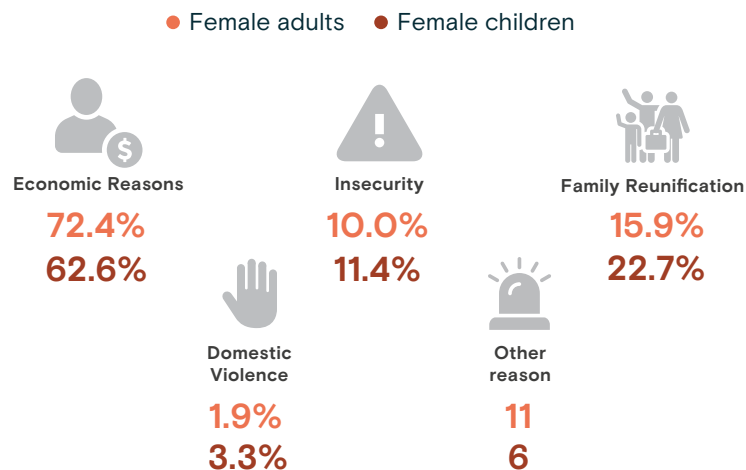


Source: Dirección General de Migración y Extranjería (DGME).

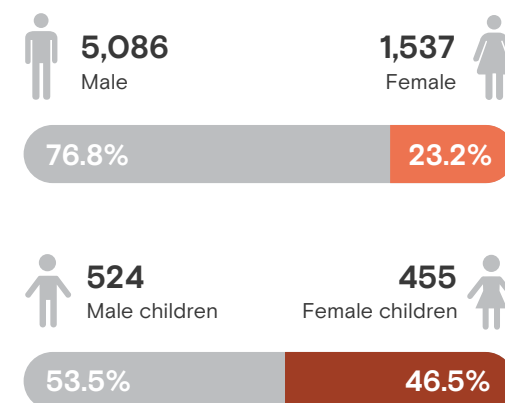
**Returned female migrants by country of apprehension**  
 January - August 2023



**Reported motivations to migrate**  
 January - August 2023

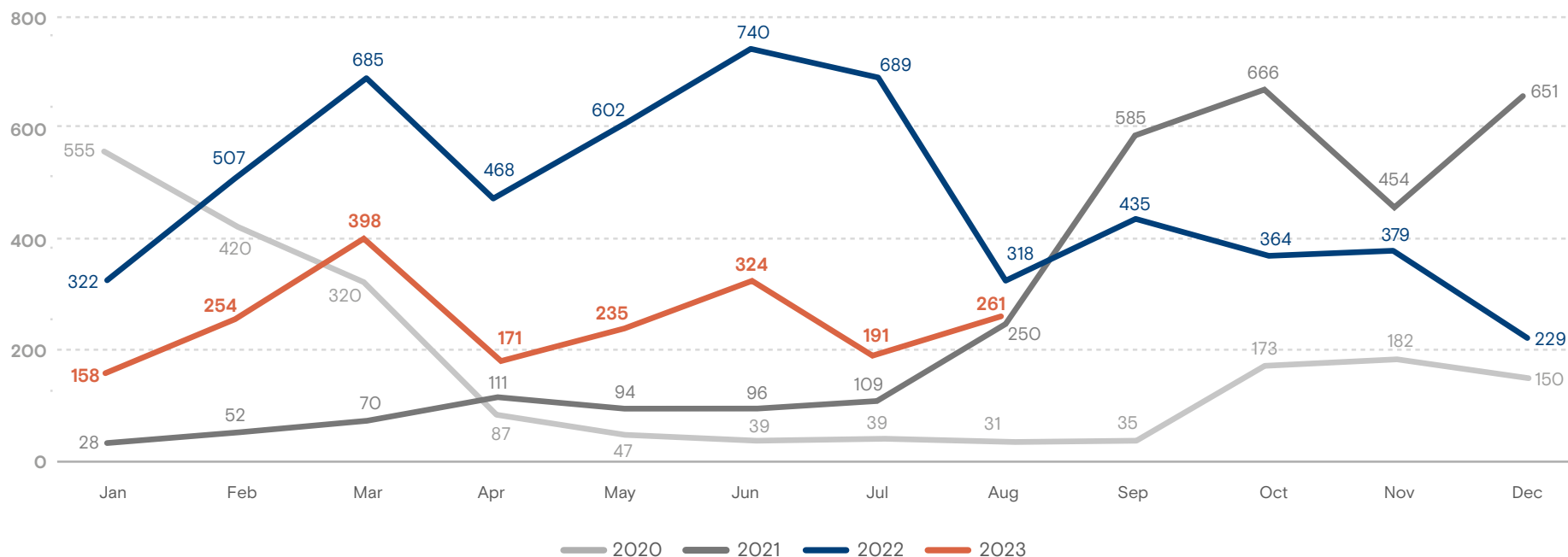


**Returned migrants by sex**  
 January - August 2023



## Total number of returned female migrants to El Salvador by month

January 2020 – August 2023



Source: Dirección General de Migración y Extranjería (DGME).

## Variation: January – August 2022 and January – August 2023

### Total Variation

**-54.0%** ↓

2022: 4,331  
2023: 1,992

### United States

**-50.5%** ↓

2022: 3,131  
2023: 1,551

Female adults

Children and Adolescents

**-35.5%** ↓

2022: 1,915  
2023: 1,236

**-74.1%** ↓

2022: 1,216  
2023: 315

### Mexico

**-64.1%** ↓

2022: 1,161  
2023: 417

Female adults

Children and Adolescents

**-61.6%** ↓

2022: 742  
2023: 285

**-68.5%** ↓

2022: 419  
2023: 132